

RM of North Battleford No. 437
SASKATCHEWAN

ZONING DISTRICT MAP

ZONING DISTRICTS

- (A) AGRICULTURE
- (C1) COMMERCIAL
- (C2) RESTRICTED COMMERCIAL/LIGHT INDUSTRIAL
- (M1) INDUSTRIAL
- (CR1) LOW DENSITY COUNTRY RESIDENTIAL
- (CR2) MEDIUM DENSITY COUNTRY RESIDENTIAL
- (CR3) HIGH DENSITY COUNTRY RESIDENTIAL

• This is the Zoning District Map which accompanies Bylaw Number _____ adopted by the Rural Municipality of North Battleford No. 437.

Reeve _____


Administrator _____

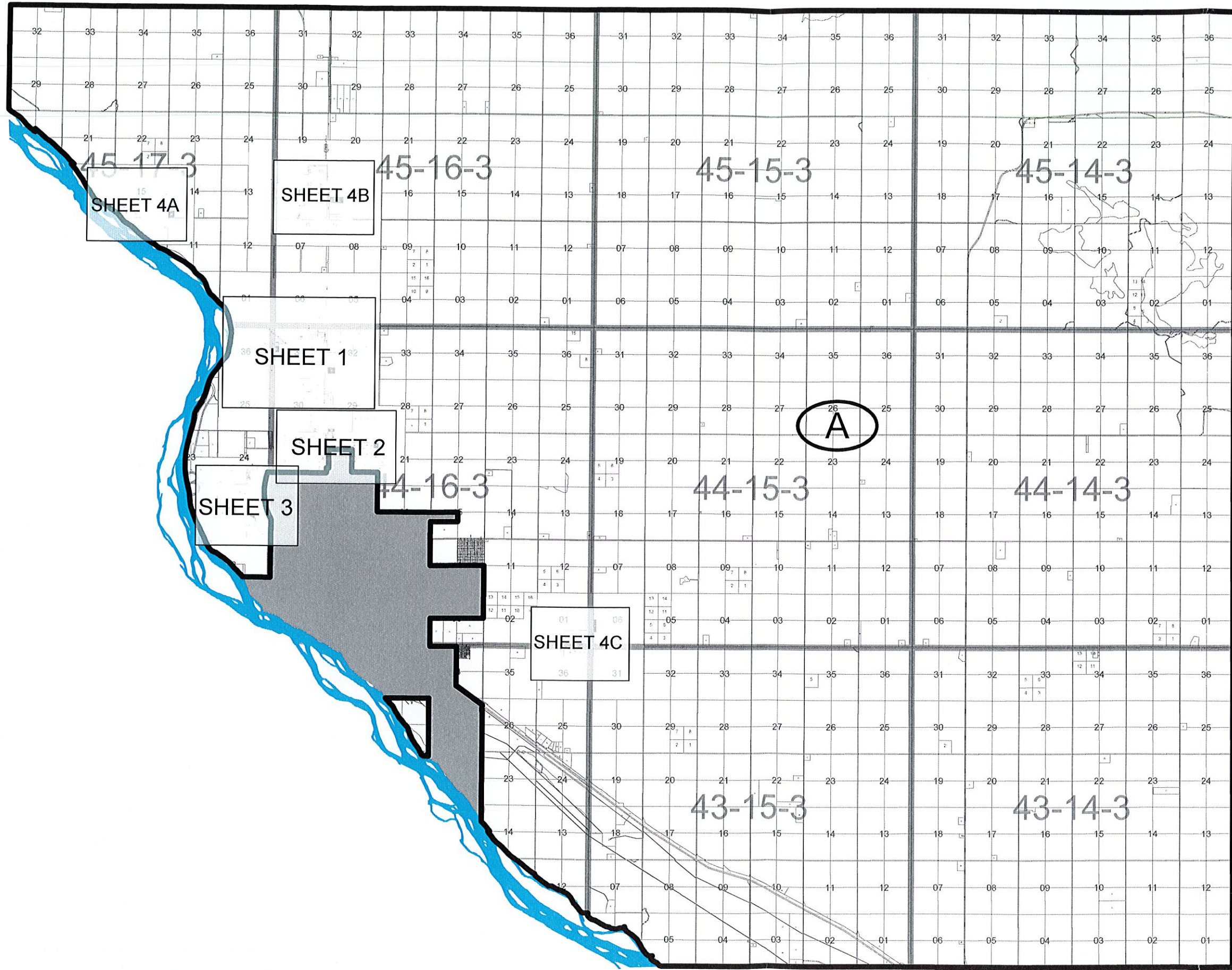
• Approved on the _____ day of _____

Minister
Saskatchewan Government Relations

CROSBY HANNA & ASSOCIATES  407C 1st Ave. North
Saskatoon, SK S7K 1X5
www.crosbyhanna.ca

LANDSCAPE ARCHITECTURE T (306) 665-3441
COMMUNITY PLANNING F (306) 652-9613

Overview  DATE
Oct-2015
PROJECT NO.
CHA 14067



01

06

05

RM of North Battleford No. 437
SASKATCHEWAN

ZONING DISTRICT MAP

ZONING DISTRICTS

- (A) AGRICULTURE
- (C1) COMMERCIAL
- (C2) RESTRICTED COMMERCIAL/LIGHT INDUSTRIAL
- (M1) INDUSTRIAL
- (CR1) LOW DENSITY COUNTRY RESIDENTIAL
- (CR2) MEDIUM DENSITY COUNTRY RESIDENTIAL
- (CR3) HIGH DENSITY COUNTRY RESIDENTIAL

This is the Zoning District Map which accompanies Bylaw Number _____ adopted by the Rural Municipality of North Battleford No. 437.

Reeve _____

Administrator _____

Approved on the _____ day of _____

Minister
Saskatchewan Government Relations

CROSBY HANNA & ASSOCIATES  407C 1st Ave. North
Saskatoon, SK S7K 1X5
www.crosbyhanna.ca

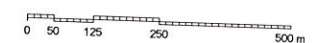
LANDSCAPE ARCHITECTURE T (306) 665-3441
COMMUNITY PLANNING F (306) 652-9613

Map Sheet 1



DATE
Oct-2015

PROJECT NO.
CHA 14067



45-17-W3 45-16-W3

44-17-W3 44-16-W3

PUBLIC IMPROVEMENT

PUBLIC IMPROVEMENT

36

31

32

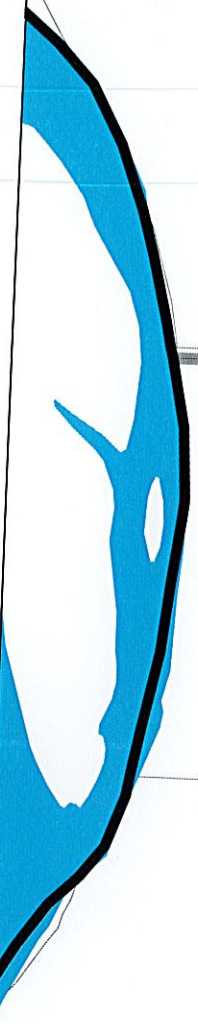
25

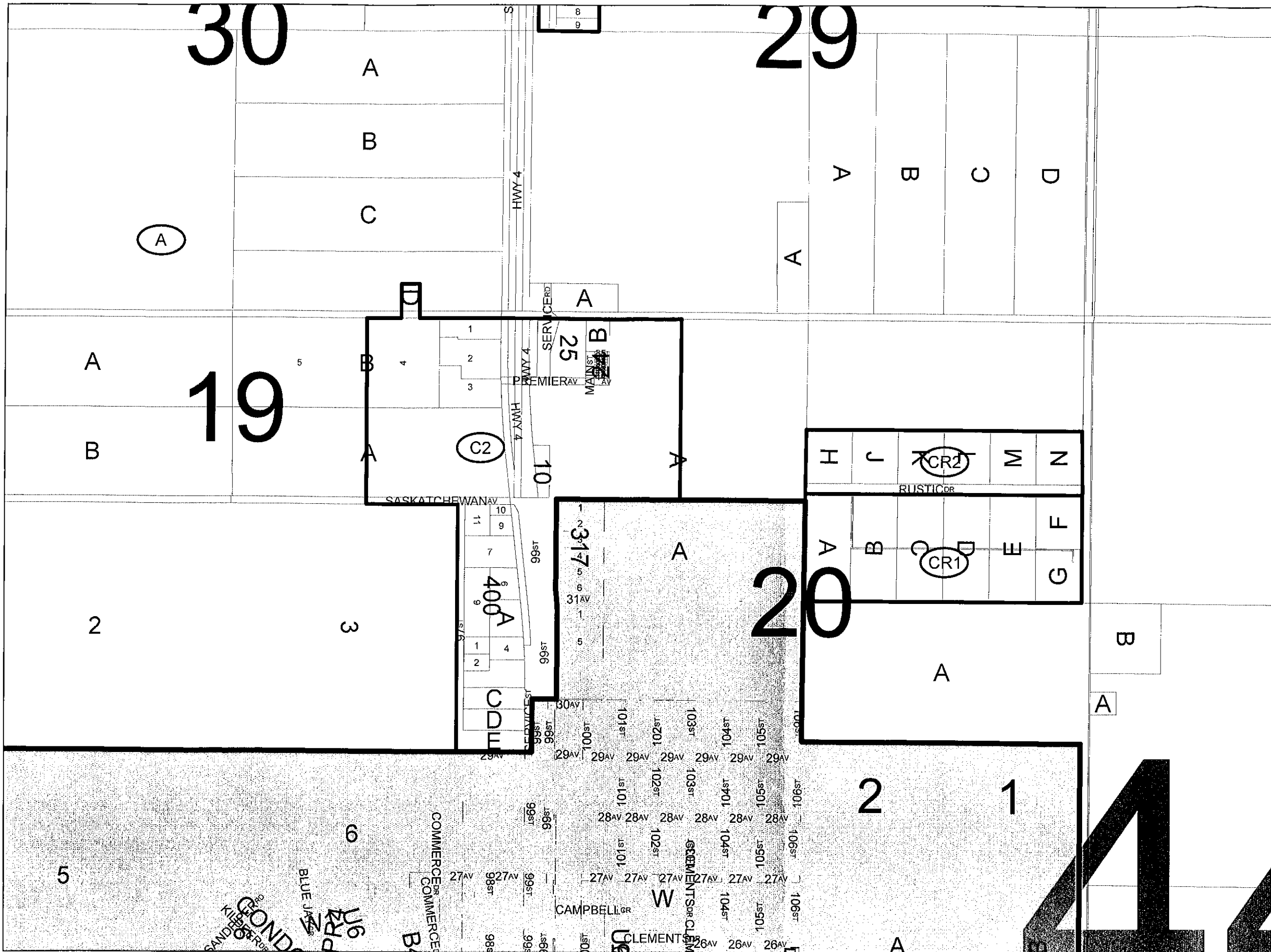
30

29

Map of a residential lot with a grid of 9x9 blocks. A central block is circled and labeled (CR2). The lot is bounded by Royal Oak Dr to the north and south, and Service St to the east. A north-south road is labeled HWY 4.

Map of a narrow lot with a grid of 9 blocks. The top block is circled and labeled (M1). The lot is bounded by Service St to the west and east, and HWY 4 to the north and south.





RM of North Battleford No. 437
SASKATCHEWAN

ZONING DISTRICT MAP

- ZONING DISTRICTS
- (A) AGRICULTURE
 - (C1) COMMERCIAL
 - (C2) RESTRICTED COMMERCIAL/LIGHT INDUSTRIAL
 - (M1) INDUSTRIAL
 - (CR1) LOW DENSITY COUNTRY RESIDENTIAL
 - (CR2) MEDIUM DENSITY COUNTRY RESIDENTIAL
 - (CR3) HIGH DENSITY COUNTRY RESIDENTIAL

This is the Zoning District Map which accompanies Bylaw Number adopted by the Rural Municipality of North Battleford No. 437.

Reeve _____

Administrator _____

Approved on the _____ day of _____

Minister
Saskatchewan Government Relations

CROSBY HANNA & ASSOCIATES

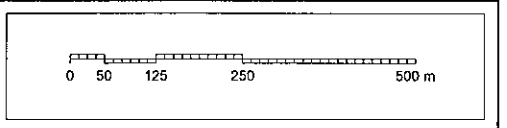
407C 1st Ave. North
Saskatoon, SK S7K 1X5
www.crosbyhanna.ca

LANDSCAPE ARCHITECTURE T (306) 665-3441
COMMUNITY PLANNING F (306) 652-9613

Map Sheet 2
44-16-W3

DATE
Oct-2015

PROJECT NO.
CHA 14067





RM of North Battleford No. 437
SASKATCHEWAN

ZONING DISTRICT MAP

- ZONING DISTRICTS**
- (A) AGRICULTURE
 - (C1) COMMERCIAL
 - (C2) RESTRICTED COMMERCIAL/LIGHT INDUSTRIAL
 - (M1) INDUSTRIAL
 - (CR1) LOW DENSITY COUNTRY RESIDENTIAL
 - (CR2) MEDIUM DENSITY COUNTRY RESIDENTIAL
 - (CR3) HIGH DENSITY COUNTRY RESIDENTIAL

• This is the Zoning District Map which accompanies Bylaw Number _____ adopted by the Rural Municipality of North Battleford No. 437.

Reeve _____

Administrator _____

• Approved on the _____ day of _____

Minister
Saskatchewan Government Relations

CROSBY HANNA & ASSOCIATES

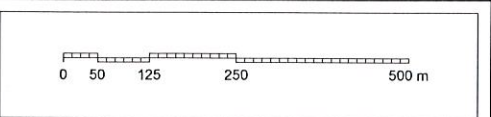
407C 1st Ave. North
Saskatoon, SK S7K 1X5
www.crosbyhanna.ca

LANDSCAPE ARCHITECTURE T (306) 665-3441
COMMUNITY PLANNING F (306) 652-9613

Map Sheet 3

DATE
Oct-2015

PROJECT NO.
CHA 14067



ZONING DISTRICT MAP

ZONING DISTRICTS

- (A) AGRICULTURE
- (C1) COMMERCIAL
- (C2) RESTRICTED COMMERCIAL/LIGHT INDUSTRIAL
- (M1) INDUSTRIAL
- (CR1) LOW DENSITY COUNTRY RESIDENTIAL
- (CR2) MEDIUM DENSITY COUNTRY RESIDENTIAL
- (CR3) HIGH DENSITY COUNTRY RESIDENTIAL

• This is the Zoning District Map which accompanies Bylaw Number _____ adopted by the Rural Municipality of North Battleford No. 437.

Reeve _____


Administrator _____

• Approved on the _____ day of _____

Minister
Saskatchewan Government Relations

CROSBY HANNA & ASSOCIATES  407C 1st Ave. North
Saskatoon, SK S7K 1X5
www.crosbyhanna.ca

LANDSCAPE ARCHITECTURE T (306) 665-3441
COMMUNITY PLANNING F (306) 652-9613

Map Sheet 4  DATE Oct-2015
PROJECT NO. CHA 14067

