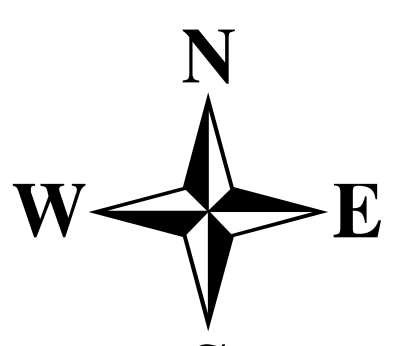


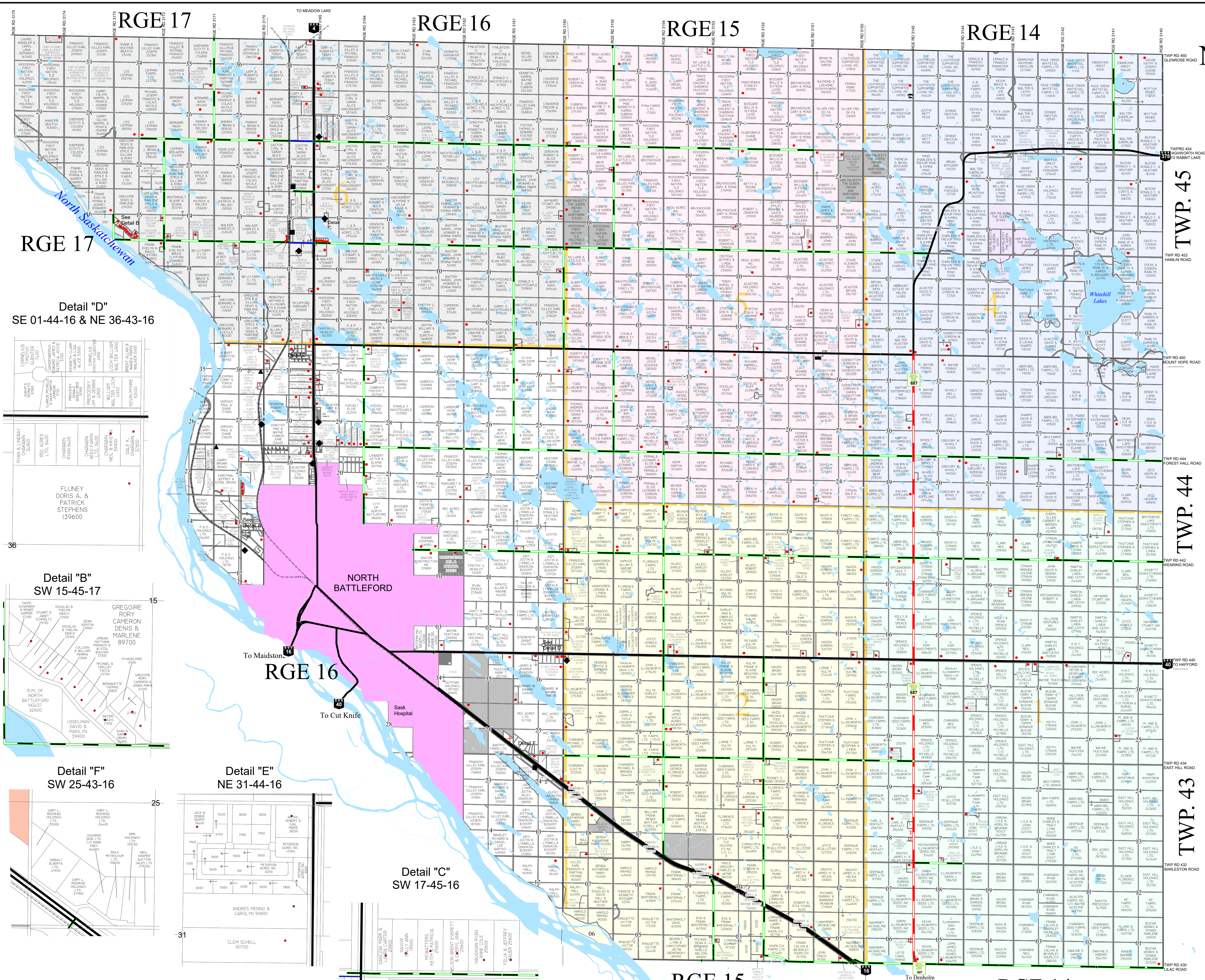
# RURAL MUNICIPALITY OF NORTH BATTLEFORD No. 437 WEST OF THE 3rd MERIDIAN

Ph: 306-445-3604  
Email: [rm437@sasktel.net](mailto:rm437@sasktel.net)  
Website: [rmofnorthbattleford.com](http://rmofnorthbattleford.com)

- ### LEGEND
- School
  - Residence
  - Cemetery
  - Gravel Pit
  - Communication Tower
  - Recreation Center
  - Business Site
  - Grain Elevator
  - Provincial Highway
  - Primary Grid Road (Gravel)
  - Main Farm Access Road
  - Main Farm Access Road (Paved)
  - Railway
  - Division Boundary
  - Urban Region
  - Sibley Wildlife Refuge
  - Little Pine/Mosomin First Nation
  - Waterbody Region
  - Watercourse



0 5 Kilometers



Detail "D"  
SE 01-44-16 & NE 36-43-16

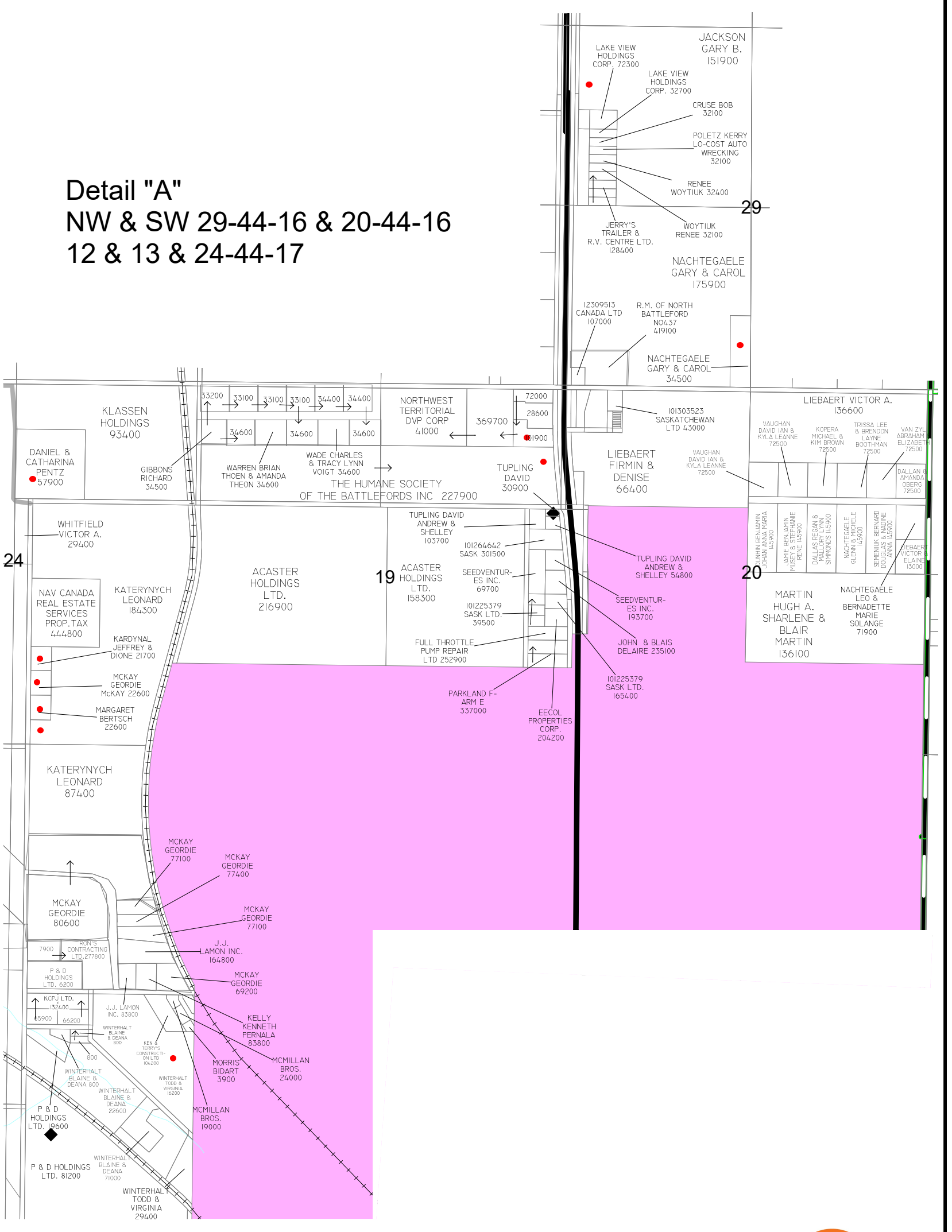
Detail "B"  
SW 15-45-17

Detail "F"  
SW 25-43-16

Detail "E"  
NE 31-44-16

Detail "C"  
SW 17-45-16

Detail "A"  
NW & SW 29-44-16 & 20-44-16  
12 & 13 & 24-44-17



Note:  
This map has been produced by MuniSoft for the R.M. North Battleford No. 437 using information supplied by others. Geospatial data and topographic data (Copyright Her Majesty the Queen in Right of Canada) have been provided by Information Services Corporation of Saskatchewan for the production of this map under license to the municipality. Duplication in whole or in part is prohibited. It is the responsibility of the user to verify the accuracy of the information since changes in assessment, ownership and other information may have changed since the time of printing. e&OE.

Update September 2021

