

Exhibit "A"

The Rural Municipality of North Battleford No. 437

Bylaw No. 6-2022

A BYLAW TO AMEND BYLAW 5-2016 KNOWN AS THE ZONING BYLAW

The Council of the Rural Municipality of North Battleford No. 437, in the Province of Saskatchewan, enacts to amend Bylaw No. 5-2016 as follows:

1. **Section 4.13.1(b) Home Based Businesses and Farm Based Businesses** is deleted in its entirety and replaced with the following new Section:

"4.13.1(b) The operator of the Home-Based Business or Farm-Based business is the resident of the principal dwelling unit on the site. No more than 5 non-resident employees may be employed at the site for both Home-Based businesses and Farm-Based businesses."

2. **The Zoning District Map referred to in Section 7** is amended by rezoning Parcel A, Plan No. K1806 Ext. 103 located in the SE of Section 23-44-17-W3M, from A – Agriculture District to CR2 – Medium Density Country Residential District, as shown within the bold dashed line on the attached Schedule "A" which forms part of this bylaw.
3. This Bylaw shall come into force and take effect when approved by the Minister of Government Relations.



Reeve



Administrator



Certified a true copy of Bylaw No. 6-2022
adopted by resolution of Council on the 14 day of
September 2022.



Administrator



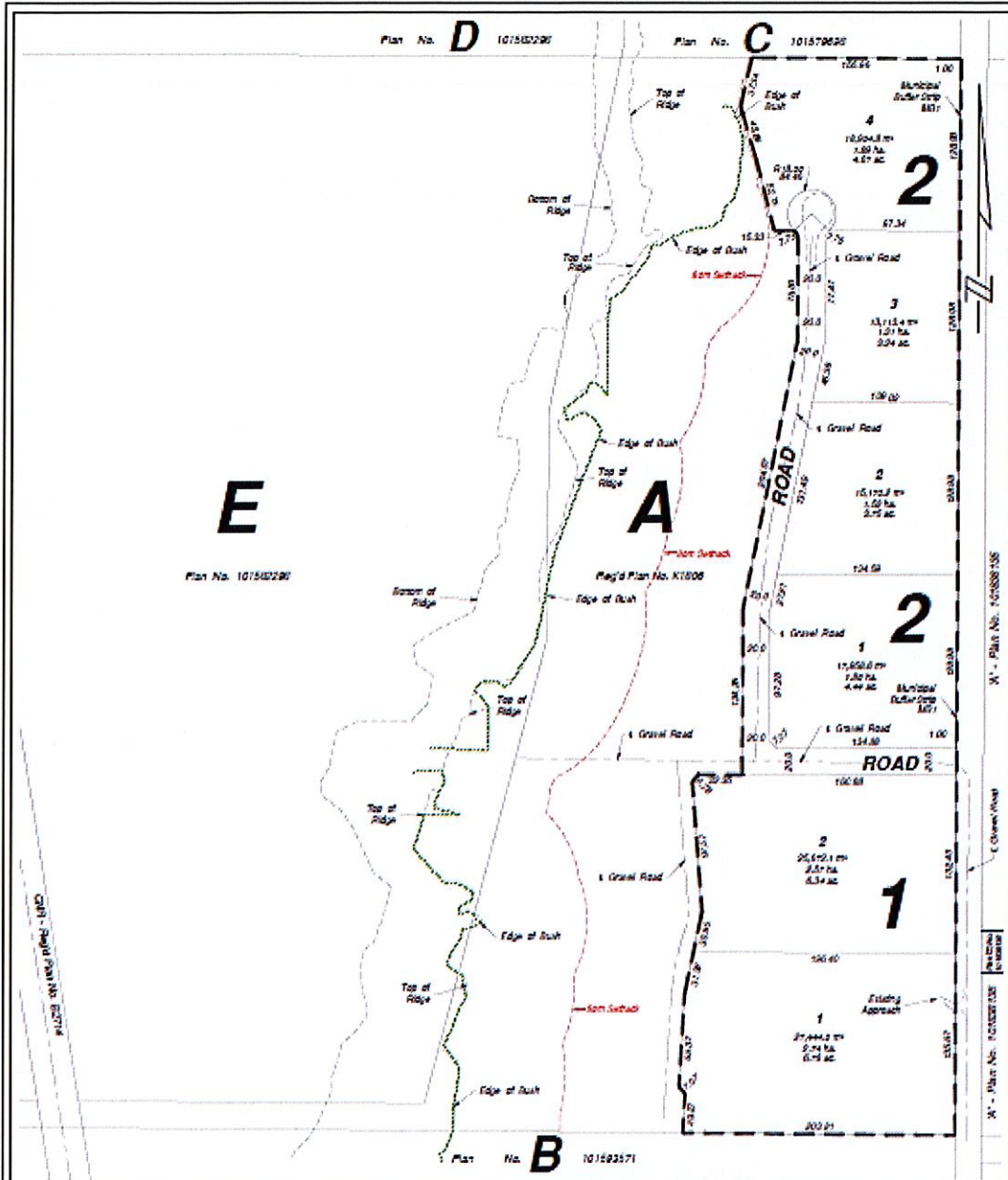
APPROVED
REGINA, SASK.

OCT 24 2022



Minister of Government Relations

SCHEDULE A



NOTES

- Measurements are in metres and decimals thereof with an accuracy of a 100 metres.
- Standard road allowances shown in this plan are 20.177m in width.
- Portion to be surveyed is outlined by a heavy broken line and contains 12.12 Hectares more or less.
- Spot elevations are Geodetic, and shown on Page Two.

MINISTRY OF GOVERNMENT RELATIONS

PLAN OF PROPOSED SUBDIVISION

Showing Subdivision of
 Part of Parcel A, Reg'd Plan No. K1806
 S.E. 1/4 Sec. 23 - Twp. 44 - Rge. 17 - W.3Mer.
R.M. of North Battleford, No. 437
Saskatchewan
 Scale 1:3000

By: 
 SASKATCHEWAN LAND SURVEYOR

No.	Date	Revision	Rev. By	Chd. By
7	10/24/02	• Removed Lots & MBZ, Adjusted Lot Boundaries, Renumbered Lots	W.J.N.	M.P.
8	20/10/27	• Added 50m Setback	W.J.N.	M.P.

Drawn By:	Checked By:	Date:	File No.:	Drawing Name:	Rev.:
B.G.	M.P.	December 18th, 2013	W12172	W12172-PPP2	7

Meridian Survey Ltd.